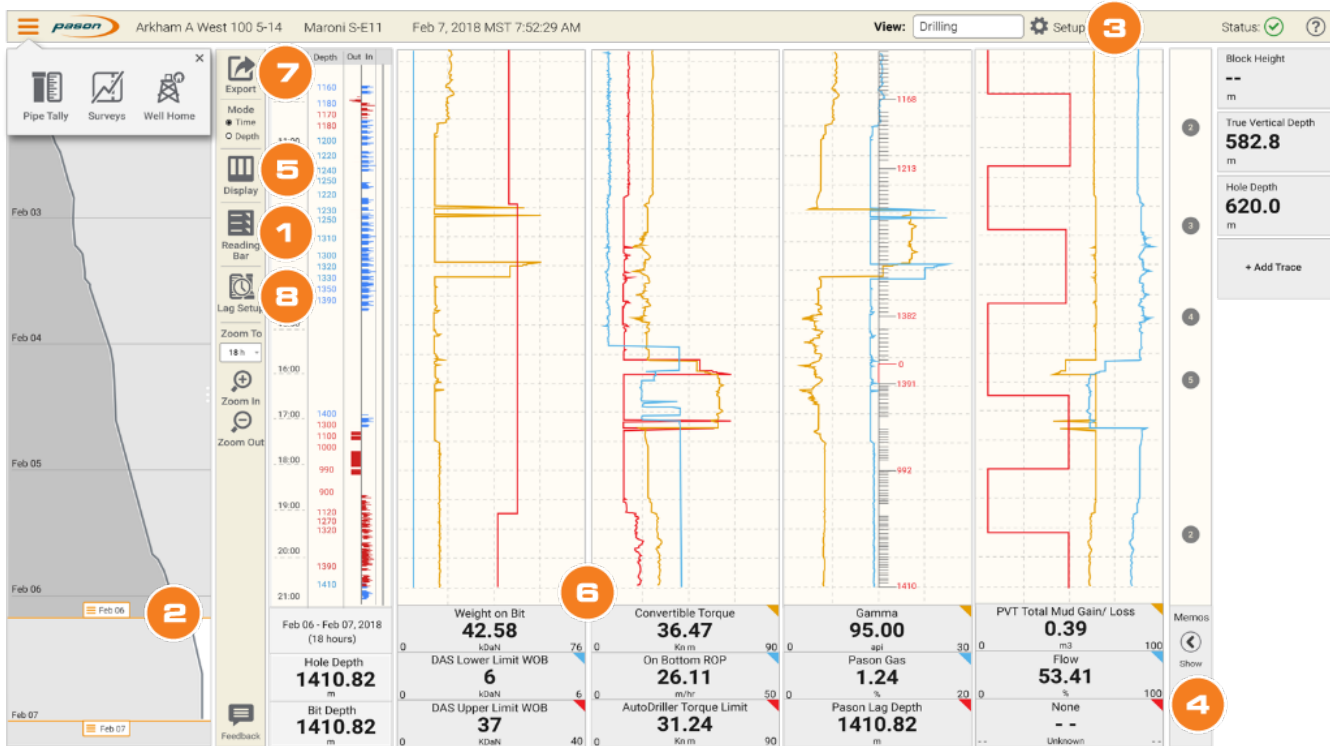




Pason Live is a customizable, web-based data viewer for the office. It provides powerful visualization tools that display real-time drilling data and provide an accurate overview of current rig activity.



Reading Bar

The current **reading bar** offers an easy-to-read view of all the data for a selected point. To turn it on, select the reading bar icon on the left sidebar. Click in the trace graphs to move the bar.



As you scroll through the charts, the current reading bar remains in place and displays the data at the point it intercepts. To turn off the current reading bar, select the icon again.



Well Profile

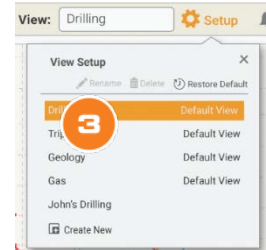
The **well profile** shows your entire well to date (or by depth), with the section displayed on the graphs highlighted between the orange handles.

To adjust your view on the graphs, click and drag the top or bottom handle to widen or narrow the timeframe or depth displayed. You can also click and drag to select an area of the well profile so the selection fills the graphs. Select the double arrow and drag to pan forward or back in time/depth, or scroll the mouse wheel.



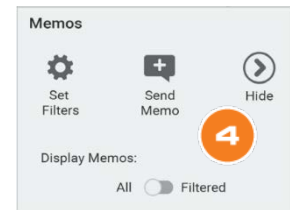
View

A **view** is a saved configuration of trace graphs and boxes. You can modify the default view or set up and save your own custom views. Select **Setup** to open a menu where you can rename, delete, and create new views. Move between preconfigured views using the dropdown menu. Changes are saved automatically.



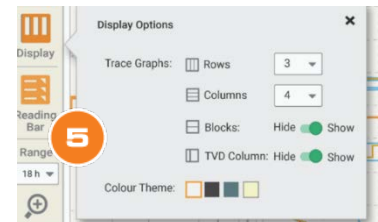
Memos

Expand the **Memos** panel to view, send, search, and filter memos.

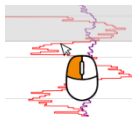


Display

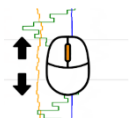
To customize the display, select **Display**, then choose to view up to six trace graphs (columns) at a time, with up to six traces (rows) per graph. You can also choose to show or hide the trace blocks on the right, the TVD column, and select the color theme that offers the best visibility for your working conditions.



Traces



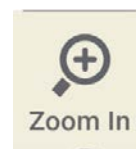
Position your mouse over the trace graphs to zoom and pan. Click and drag on the trace graphs to select an area, then release the mouse button to zoom in so the selection fills the graphs. Doubleclick to zoom out to the previous level.

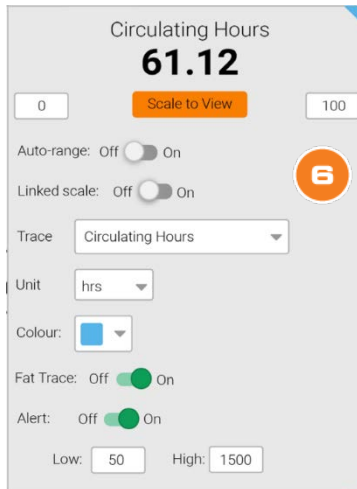


Scroll the mouse wheel to pan forward or backward in time.

You can also zoom in and out using the buttons on the left, or jump between predefined zoom

levels using the Zoom To drop-down menu.





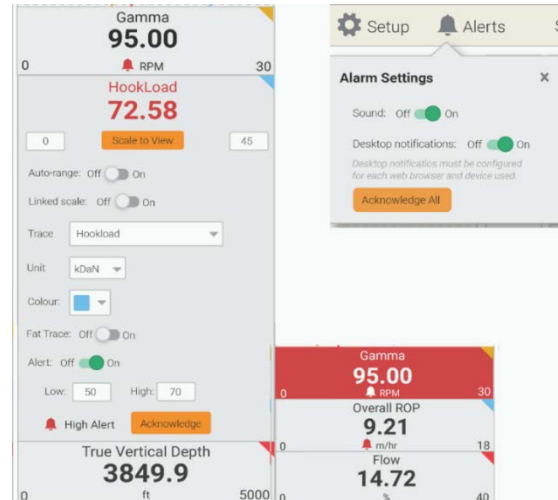
Select a **trace box** to expand it to show more options. You can change the trace, display units, colour, and configure alerts. Set the scale manually or turn on autorange on to let the software dynamically adjust it for you.

Toggle on linked scales to link all the ranges in a column and edit their ranges as a group.

For applicable traces, toggle on fat traces or change the trace to a ruler.

Select outside of the trace box to collapse it again.

Configure **alerts** in the trace and real-time boxes.



When a trace exceeds the upper or lower limits, it turns red.

From the Alerts settings panel, you can enable sounds and desktop notifications for trace alerts.

Export View



Select **Export** to export your current view as a .las or .csv file. The Export button opens a window where you can specify the traces that you want to download.

Lag Trace

You can set up a **gas lag trace** to represent the depth that the mud currently in the shaker came from, and therefore the depth at which gas shown in a gas trace entered the well. You can choose from five lag calculation methods: time, stroke, volume, EZETime, and annular velocity. Select **Lag Setup** from the menu bar on the left.

